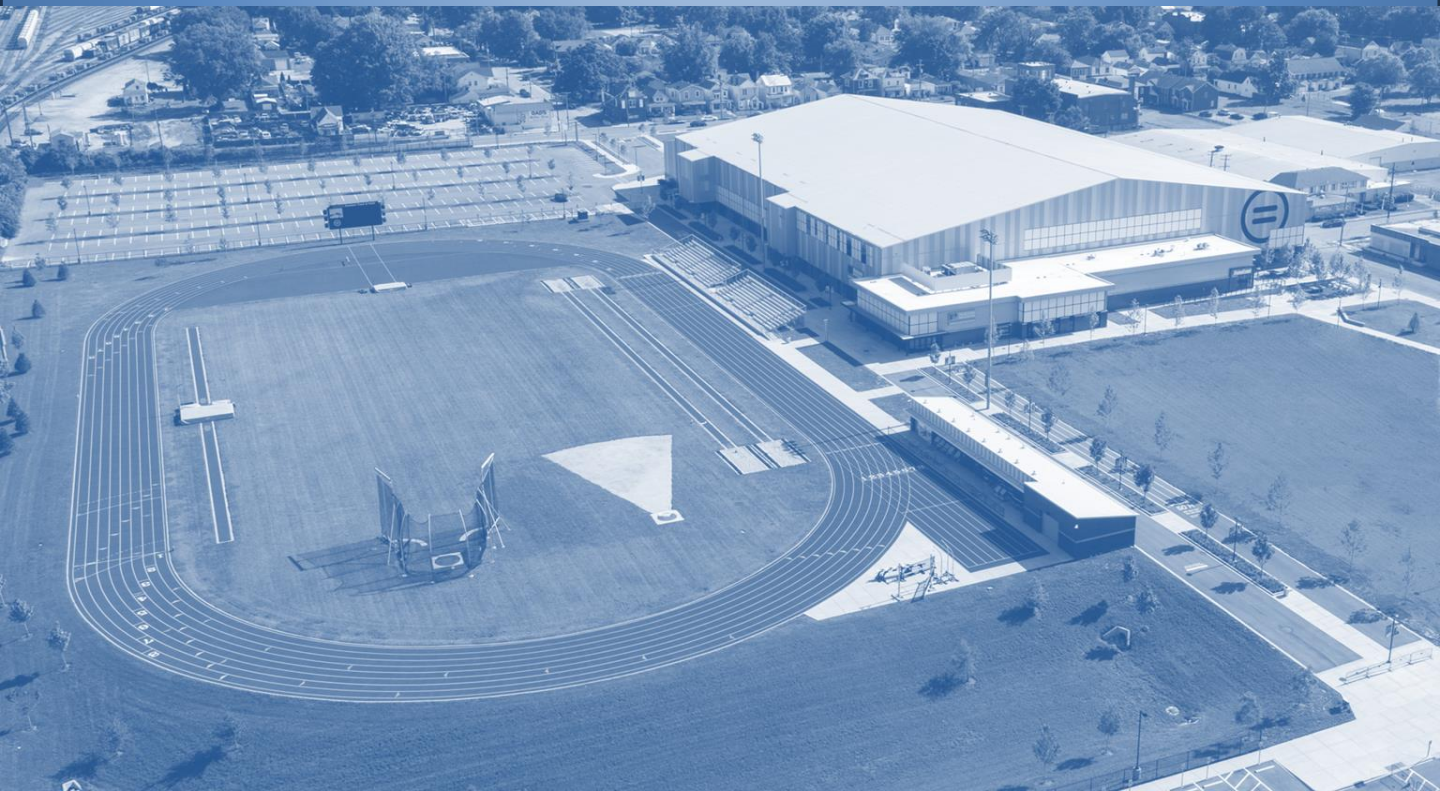




**NORTON  
HEALTHCARE**

**Sports & Learning Center**

# Tech Pack



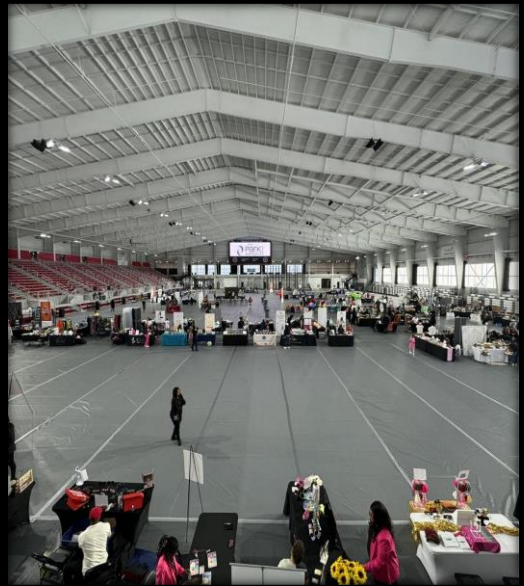
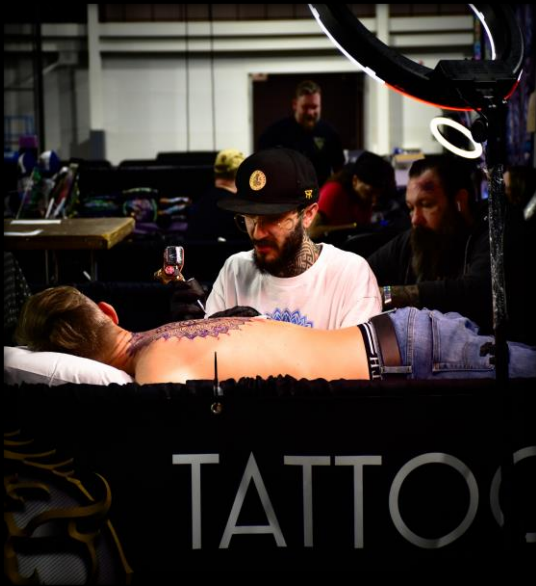












## ADMINISTRATION

### MARCUS MCALPIN

Facility General Manager  
Office: (502) 916-8251  
Cell: (502) 640-8548  
[mmcalpin@nortonslc.com](mailto:mmcalpin@nortonslc.com)

## SALES / BOOKING

### DANIELLE BURBAGE

Event Sales Manager  
Office: (502) 916-8226  
Cell: (502) 977-0461  
[dburbage@nortonslc.com](mailto:dburbage@nortonslc.com)

## IT

### SHELBY GORDON

Systems Administrator  
Office: (502) 916-8213  
Cell: (502) 974-7440  
[sgordon@nortonslc.com](mailto:sgordon@nortonslc.com)

## MARKETING

### SANDRA MORAN

Marketing Director  
Office: (502) 690-9278  
Cell: (502) 991-1546  
[smoran@kfcyumcenter.com](mailto:smoran@kfcyumcenter.com)

## EVENT MGMT / GUEST SERVICES

### KEVIN WASHAM

Event Manager  
Office: (502) 515-2214  
Cell: (502) 232-3802  
[kwasham@nortonslc.com](mailto:kwasham@nortonslc.com)

## OPERATIONS / SECURITY

### JUSTIN BURRUS

Operations Manager  
Office: (502) 909-0604  
Cell: (502) 640-9276  
[jburrus@nortonslc.com](mailto:jburrus@nortonslc.com)

## MAINTENANCE / FACILITY

### RON ANDERSON

Maintenance / Facilities Manager  
Office:  
Cell: (502) 640-3550  
[randerson@nortonslc.com](mailto:randerson@nortonslc.com)

## FOOD / BEVERAGE

### THOMAS JOYNER

Sodexo General Manager  
Cell: (502) 500-0179  
[thomas.joyner@sodexo.com](mailto:thomas.joyner@sodexo.com)

## **SEATING CAPACITIES**

- 4,000 for track
- 4,800 for concerts
- (includes 1% ADA disabled locations and 1% companion seating)

## **SEATING LEVELS**

- Grandstands: 2,797
- Retractable stands: 1,216
- Floor: 2,000
- (Permanent seating is bleacher style and portable seating is padded)

## **FLOOR DIMENSIONS**

- Event floor: 64,500 sq. ft. (with retractable seating pushed in) suitable for basketball, volleyball, archery, cheer and dance, wrestling, concerts, conventions and large-scale productions
- 355' long x 203' wide
- Certain areas of the main floor are hollow (track areas) and will only hold a certain weight. There are 2 reinforced areas that is rated to hold 15,000 lbs (see Event Manager for further details).



## **SPECIFICATIONS FOR TRACK EVENTS**

- 6-lane, 200 meter hydraulically banked Mondo track.
- Two minutes to raise or lower for banked corners.
- There are eight 60-meter lanes (for sprints and hurdles) located within the infield.
- Dual horizontal runways for pole vault, long jump and triple jump.
- Portable weight throw sectors and cage for shot-put located outside the oval next to the implement/weigh-in station.
- Built to the specifications of the NFHS, NCAA, and USATF.

## **TIMING SYSTEM**

- Lynx timing and scoring system sync to the LED boards.
- The boards are designed to show instant results, team scores, event leaders, video commercials and messages all at the same time.
- The surround sound speakers provide sound for announcements and video.
- The venue currently does not have a preferred timing company for meets. However, DC Timing has extensive experience in the facility.

## **MEDIA AND OPERATIONS**

- The press area is designed to accommodate TV, print and electronic media representatives.
- There are individual workstations allowing for up to 20 people with individual wireless and ethernet plugs.
- The timing box is located next to the press box and is designed for use by the timing team and PA announcing staff.





**BOWLING ALLEY**

Four lane US bowling alley available for use by spectators at all track & field events (for a fee) as well as available private event rentals.  
Size: 966 sq ft  
Capacity: 20

**FUN ZONE / ROCK WALL**

Interactive climbing wall available for use by spectators at all track & field events (for a fee) as well as available for private event rentals.  
Size: 806 sq ft  
Capacity: 25



**HUMANA HUB**

Executive meeting space equipped with a portable air wall that creates the flexibility to have one large meeting room or two individual rooms. Each room has feature presentation displays. This space is available for rental.  
Size: 610 sq ft / 600 sq ft  
Capacity: 32 / 30







**MEDIA ROOM**

Size: 384 sq ft

Capacity: 8

**MULTI-PURPOSE ROOM**

Size: 779 sq ft

Capacity: 72



**WARMUP LANES**

Size: 3,025 sq ft

Capacity: 252



**MEZZANINE**

Size: 7,315

Capacity: 706

Elevator access



## **HUMANA OUTDOOR TRACK & FIELD**

- 400-meter Conica running surface
- 8 running lanes
- Triple/long jump pits
- High jump
- Pole vault
- Shot put
- Discus/hammer throwing circle
- Entire track and field area is lighted
- Restrooms adjacent to the track
- Grandstands with a seating capacity of 866
- Large LED screen and audio system





## **STAGE**

- StageRight brand (ME3750) rolling stage with all purpose decks
- Maximum stage size: 60'x40'
- Height: 48"-72"
- 2 sets of adjustable stairs
- Guardrails
- Skirting



## **BARRICADE**

- 8 ft bike rack totaling 336 linear ft.
- TensaBarrier – 30 pieces with 8 ft black ribbons.

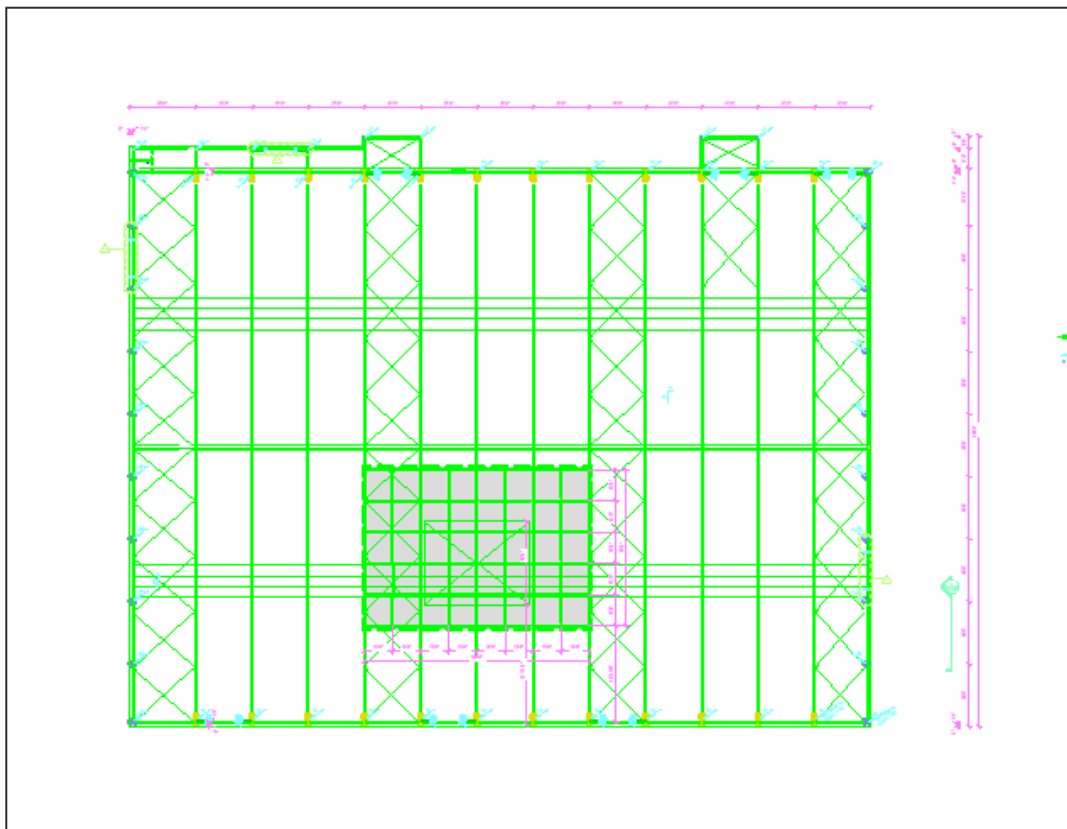


## **RISERS**

- (6) 4'x8' all purpose decks
- (6) "Z" frame risers 4'x8'x1'

**RIGGING**

- Roof height: low point 34', high point 64'.
- Rigging must be done using a lift as there is no catwalk.
- Rigging grid height: low point 43', high point 55'1".
- Max weight that can be supported by roof: 144 kips.
- Max weight per beam (varies 2 kips-4 kips). Rig plot with weight capacities available upon request.
- Distances between rigging beams: 13'6" wide x 15' deep.





## **STAGEHANDS**

- Local IATSE 17 labor (not required)
- Minimum In: 4 hours
- Minimum Out: 4 hours
- Performance minimum: 4 hours
- Please contact the Event Manager for rates and additional information

## **FORKLIFT**

- Number available in house: 1
- Max lift capacity: 6,000 lbs.
- Fork lengths: 7'

## **SCISSOR LIFT**

- Number available in house: 1
- Max height: 32 ft

## **CURTAINS / PIPE AND DRAPE**

- Blackout curtains in every window.
- 8' tall black pipe and drape available (240 total linear ft)

## **SHOW POWER**

- Upstage center, approximately 55' from the USE.
- 1,300 amp
  - (2) 400 amp, cam lock plugs
  - (2) 200 amp, cam lock plugs
  - (1) 100 amp, cam lock plug

## **HOUSELIGHTS**

- Musco LED lights with various settings and capabilities.
- House light control panels are located in the corners of the main floor.



## **VIDEO BOARD/LED SIGNS/TV**

- IPTV's
  - 1920x1080 must be .jpg
- Indoor track main LED (full screen)
  - 1856x540
- Indoor track main LED (center)
  - 960x540
- Indoor track main LED (left and right windows)
  - 448x540
- Indoor track south side LED
  - 800x432
- Outdoor track LED screen
  - 640x368
- Please provide videos as a .MP4

## **OTHER AUDIO/VISUAL SUPPLIES**

- (1) Allen and Heath Zed 16FX Audio Mixer
- (1) 5-input universal switcher
- (2) Yamaha DXR10 portable speakers with stands
- (2) lavalier microphones
- (2) wireless microphones
- (4) wired microphones
- (1) projector with remote

For a complete list, get with the Event Manager.

## DRESSING ROOMS

- 723 sq ft green room equipped with a wall mounted television and restroom with a shower.



- 779 sq ft multi-purpose room equipped with a wall mounted television.

## CATERING

- Sodexo Live is the exclusive F&B provider for the facility. Event Manager or the General Manager for Sodexo Live can provide more details.

## PHONES/DATA LINES

- The building can provide phone and data lines, costs may apply.
- Private wireless internet access is available upon request.

## LAUNDRY

- The building has a residential size washer and dryer that can be utilized (**dryer is temporarily out of service**).

## ATM

- Available inside Thornton's convenience store in the SE corner of the facility.

### LOADING / UNLOADING

- There are (2) areas with large roll up doors that can be used to load/unload:
  - NE corner of the building (closer to the stage). Approximately 120' push to the stage area.
  - NW corner of the building.
  - Both areas can be accessed from Market Street.
  - Building is not equipped with an actual loading dock.

### TRUCK / BUS PARKING

- (1) semi truck or bus can stay parked in the loading / unloading area. All other trucks should relocate to parking lot B during the event. Up to (4) buses can park on 30<sup>th</sup> Street adjacent to the building and the Green Room.
- Generators may be used in these areas.



**PARKING LOTS**

- South parking lot (Lot A) – 446 spaces
  - Spectator and participant
- North parking lot (Lot B) - 316 SPACES
  - Spectator, participant, staff

